

10X  $\nabla$ .06  $\varnothing$ .130  
 $\oplus$ .0009(M)A(B(M)

8X R.125

$\nabla$ 0.06 $\varnothing$ .200  
 $\oplus$ .0009(M)A(B(M)

.063 $\pm$ .001

6X R.13  
2X 90°

///.001C

.250

.125

.300

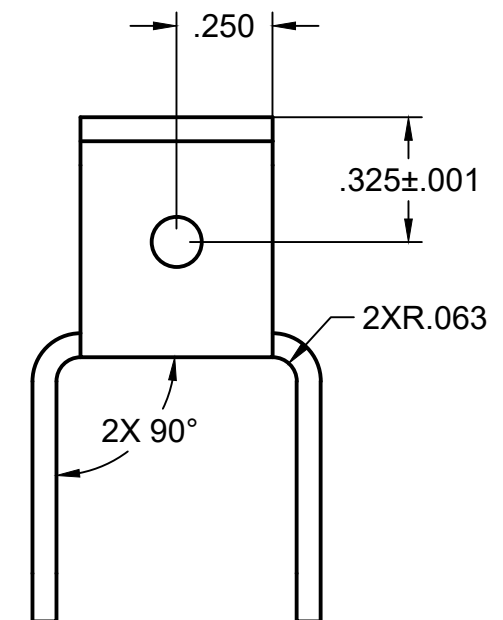
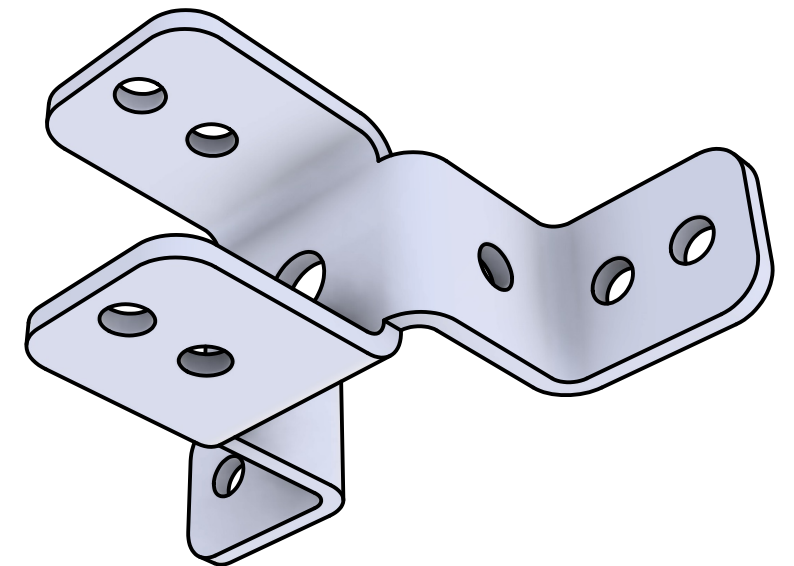
.500 $\pm$ .001

.750

A

B

C

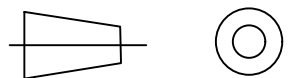


- Notes:
1. MATERIAL SHOULD BE COMPLIANT AS PER AMS-4016
  2. FINISH: CLEAR ANODIZE
  3. REMOVE ALL BURRS, SHARP EDGES AND CONTAMINANTS
  4. UNLESS OTHERWISE NOTED DIMENSIONS IN INCHES

Unless otherwise state  
dimensions are in inches

.X  $\pm$  .08  
.XX  $\pm$  .01  
.XXX  $\pm$  .005  
.XXXX  $\pm$  .0005  
ANGLES  $\pm$  2°

1. DO NOT SCALE DRAWING
2. REMOVE ALL BURRS AND SHARP EDGES .008 MAX.
3. 32/FINISH UNLESS NOTED



THIRD ANGLE PROJECTION



DRAWN BY  
Kyle May

DATE  
02/01/2025

QUALITY  
Riley Leonard

DATE  
02/24/2025

MFG  
Jack Rindini

DATE  
07/07/2025

Storro & Camarillo Advanced Manufacturing

ITEM DESCRIPTION  
ORTHO PLATE BRACKET

FINISH  
SEE NOTE

MATERIAL  
AL 5052-H32

SCALE  
2:1

Part #  
PP-08470001

SHT  
1/1

REV  
A